



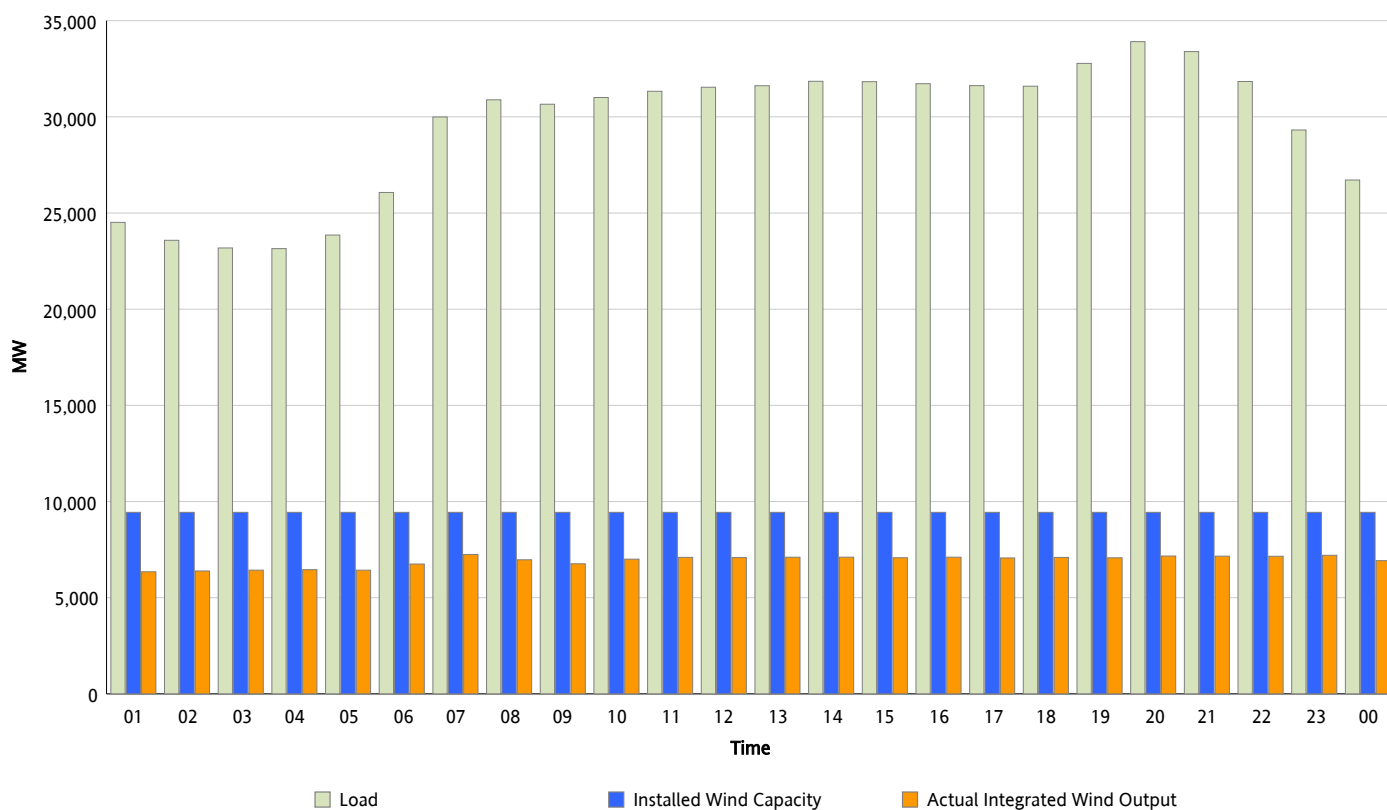
ERCOT Grid Operations

Wind Integration Report : 03/06/2012

Peak Load	33,909 MW
Load Peak Hour (HE)	20
Wind Over Peak	7,166 MW
Wind Record 03/06/12	7,403 MW
Max Wind Value*	7,403 MW
Wind Peak Time	06:55
Wind Integration %	24.02 %

Hourly Average Actual Load vs. Actual Wind Output

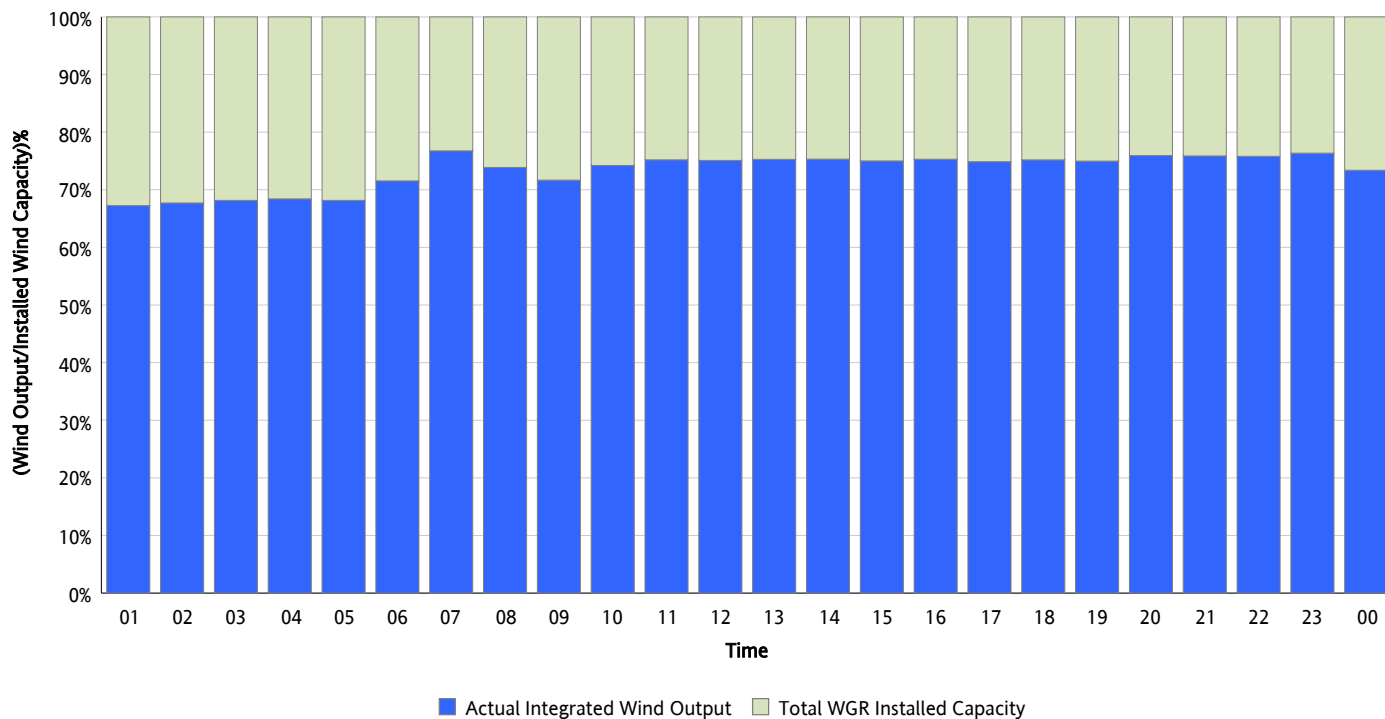
03/06/2012



* Wind Record and Wind Max represent instantaneous values and the rest of the values are integrated over the hour

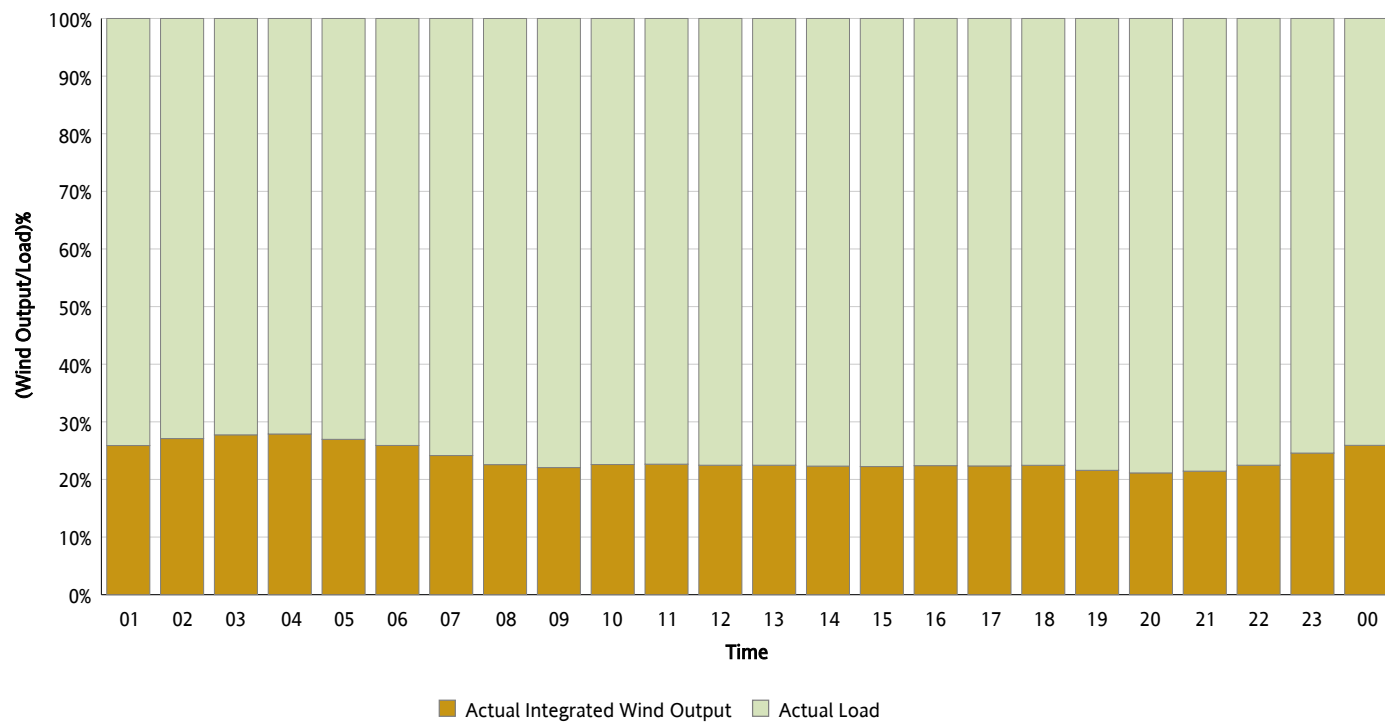
Actual Wind Output as a Percentage of the Total Installed Wind Capacity

03/06/2012



Actual Wind Output as a Percentage of the ERCOT Load

03/06/2012



ERCOT Load vs. Actual Wind Output

02/28/2012 - 03/06/2012

